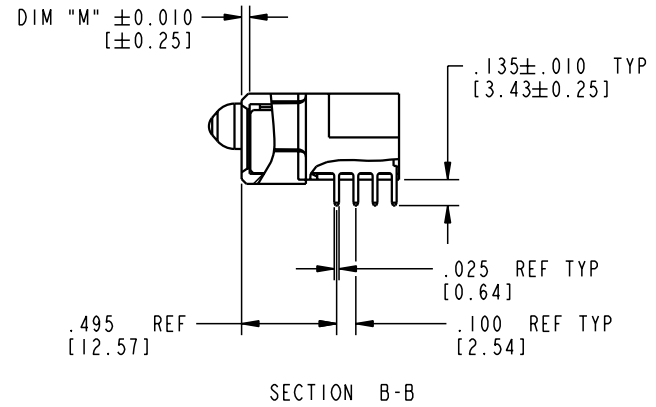
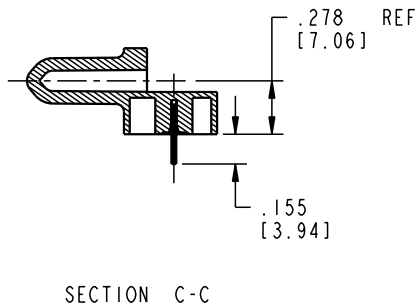
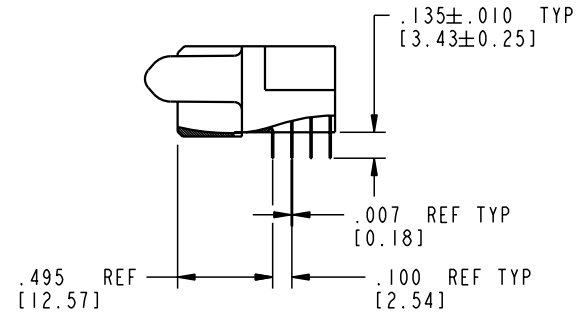
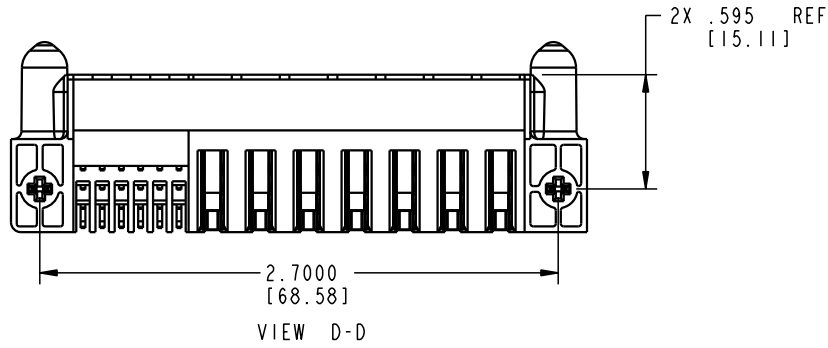


Tous droits strictement réservés. Reproduction ou communication o des tiers interdite sous quelque forme que ce soit sans autorisation écrite du propriétaire. Propriété de c FCI. Droits de reproduction FCI.

All rights strictly reserved. Reproduction or issue to third parties in any form whatever is not permitted without written authority from the proprietor. Property of FCI. Copyright FCI.



PRODUCT NUMBER
51762-10702400AA



mat'l code SEE NOTE 2				tolerances unless otherwise specified		CUSTOMER		FCI ELECTRONICS www.fciconnect.com			
ltr	ecn no.	dr	date	linear	.XX±.01/0.X±0.3	COPY		projection	title 7P + 24S RIGHT ANGLE SOLDER RECEPTACLE		
A					.XXX±.005/0.XX±0.13	INCH/MM				product family PwrBlade	code 213
					angles	.XXX±.0020/0.XXX±0.051	scale 1:1			size dwg no	sheet 2 of 4
				dr	J. SHAFFER 02-15-02			product family	code		
				enr	J. ALLISON 02-15-02			size	sheet		
				chr	J. ALLISON 02-15-02			A	2 of 4		
				appd	J. ALLISON 02-15-02			51762-10702400AA			
sheet index	revision sheet										

Pro/E

cage code 22526

PDM: Rev:A

STATUS: Released

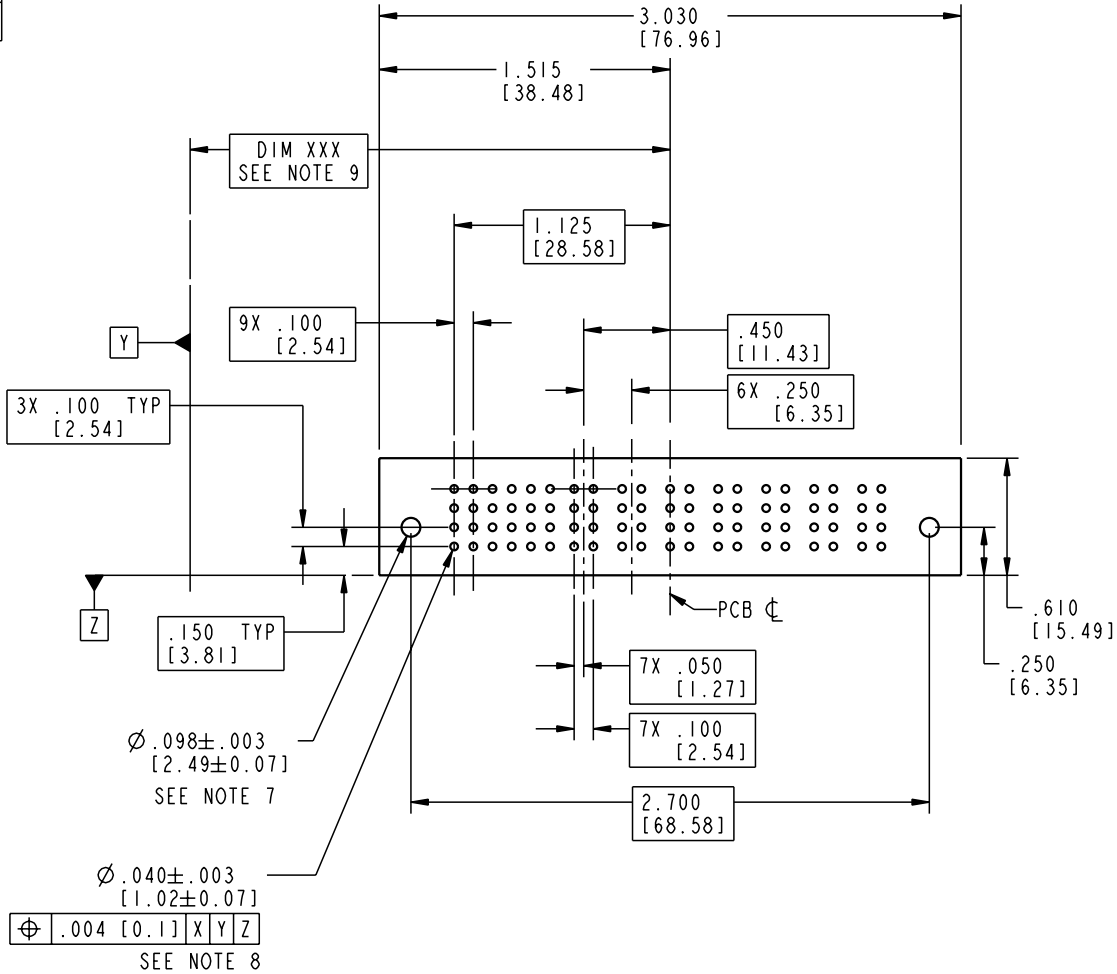
Printed: Aug 14, 2007

Tous droits strictement réservés. Reproduction ou communication o des tiers interdite sous quelque forme que ce soit sans autorisation écrite du propriétaire. Propriété de c FCI. Droits de reproduction FCI.



All rights strictly reserved. Reproduction or issue to third parties in any form whatever is not permitted without written authority from the proprietor. Property of FCI. Copyright FCI.

PRODUCT NUMBER
51762-10702400AA



mat'l code				SEE NOTE 2		tolerances unless otherwise specified		CUSTOMER		ELECTRONICS www.fciconnect.com	
ltr	ecn no.	dr	date	linear	.XX ± .01/0.X ± 0.3		COPY		title		
A					.XXX ± .005/0.XX ± 0.13		projection		7P + 24S		
				angles	.XXX ± .0020/0.XX ± 0.051				RIGHT ANGLE SOLDER RECEPTACLE		
				dr	J. SHAFFER	02-15-02	INCH/MM		product family		code
				engr	J. ALLISON	02-15-02			PwrBlade		213
				chr	J. ALLISON	02-15-02	scale		size		sheet
				appd	J. ALLISON	02-15-02	1:1		A 51762-10702400AA		3 of 4
sheet index		revision sheet									

Pro/E

cage code 22526

PDM: Rev:A

STATUS: Released

Printed: Aug 14, 2007

Tous droits strictement réservés. Reproduction ou communication o des tiers interdite sous quelque forme que ce soit sans autorisation écrite du propriétaire. Propriété de c FCI. Droits de reproduction FCI.



All rights strictly reserved. Reproduction or issue to third parties in any form, whatever is not permitted without written authority from the proprietor. Property of FCI. Copyright FCI.

1 | 2

3 |

4

PRODUCT NUMBER
51762-10702400AA

NOTES:

1. DIMENSIONS AND TOLERANCES ARE IN ACCORDANCE WITH ASME Y14.5M, 1994 UNLESS OTHERWISE SPECIFIED.

CONNECTORS NOTES:

② HOUSING MATERIAL: UL 94 V-0 GLASS FILLED HIGH TEMP THERMO PLASTIC
POWER CONTACT MATERIAL: COPPER ALLOY
SIGNAL PIN MATERIAL: COPPER ALLOY

3. PLATING:

SIGNAL PINS: 30u"/0.76um Au OVER 50u"/1.27um Ni
POWER CONTACTS: 50u"/1.27um Ni UNDER ALL WITH 30u"/0.76um Au ON CONTACT AREA AND SnPb ON PCB INTERFACE

④ "MANUFACTURER" NAME, P/N, AND DATE CODE TO APPEAR ON THIS SURFACE.

5. PRODUCT SPECIFICATION GS-12-149.

PCB - NOTES:

6. ALL HOLE DIAMETERS ARE FINISHED HOLE SIZE.

⑦ HOLD DOWN THROUGH HOLES ARE UNPLATED.

⑧ $\varnothing .0453 \pm 0.0010$ [1.151 \pm 0.025] DRILLED HOLES PLATED WITH 0.0003 [0.008] MIN SnPb OVER .001 [0.03] TO .003 [0.08] Cu PLATING TO ACHIEVE $\varnothing .040 \pm .003$ [1.02 \pm .07] HOLE.

⑨ "DIM XXX" TO BE DETERMINED BY THE CUSTOMER.

mat'l code		SEE NOTE 2		tolerances unless otherwise specified		CUSTOMER		ELECTRONICS www.fciconnect.com	
ltr	ecn no.	dr	date	linear	.XX±.01/0.X±0.3		COPY		
A					.XXX±.005/0.XX±0.13		INCH/MM		
				angles	.XXX±.0020/0.XXX±0.051				7P + 24S
				dr	J. SHAFFER	02-15-02	product family		RIGHT ANGLE SOLDER RECEPTACLE
				engr	J. ALLISON	02-15-02	PwrBlade		code
				chr	J. ALLISON	02-15-02	size		213
				appd	J. ALLISON	02-15-02	dwg no		sheet
sheet index		revision sheet		scale		1:1		A	4 of 4

1 | 2

Pro/E

3 |

cage code 22526

4